

Zebra  
**Robotics Automation™**

## CartConnect100 AMR

Increase efficiency and productivity with autonomous mobile robot (AMR) solutions designed for flexibility and safety from Zebra



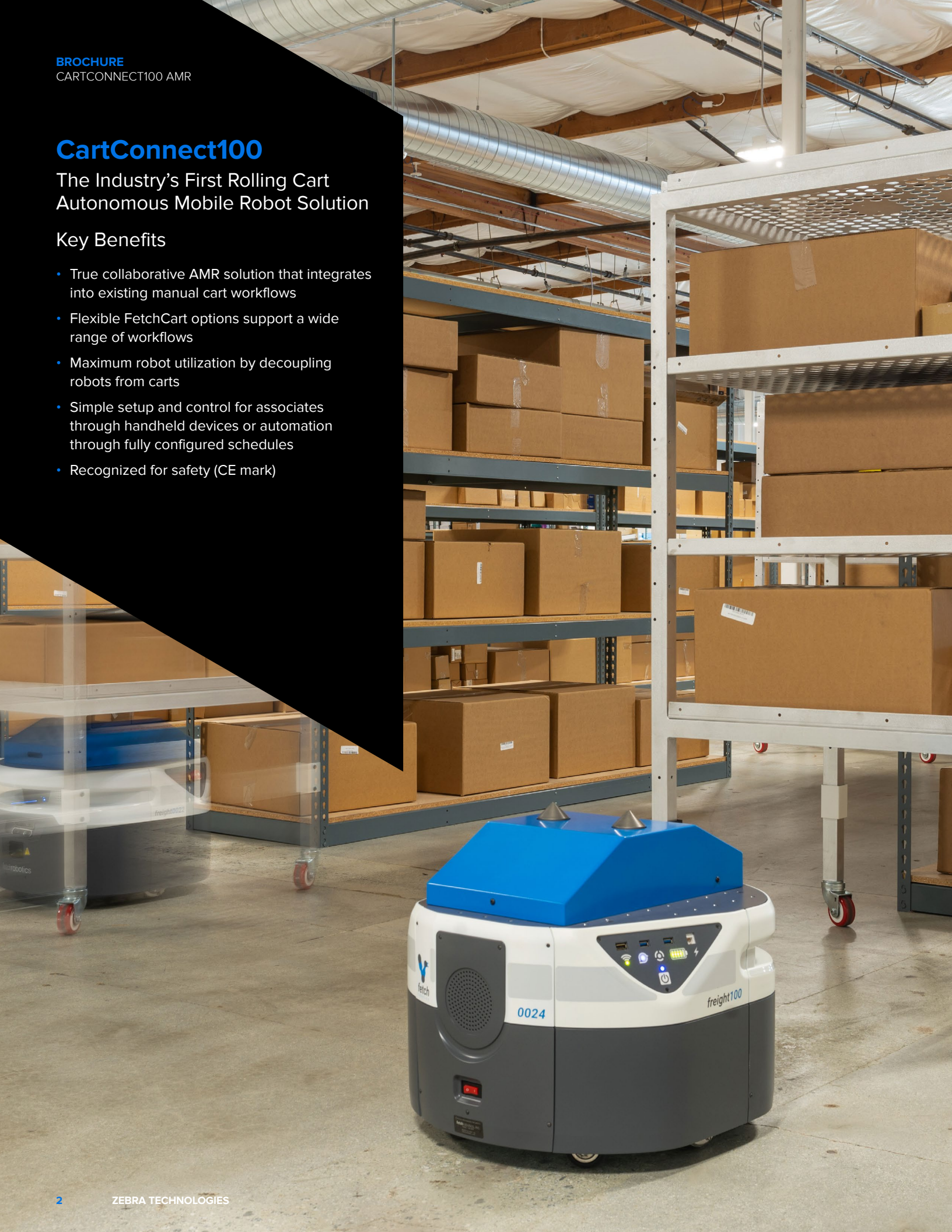


## CartConnect100

The Industry's First Rolling Cart  
Autonomous Mobile Robot Solution

### Key Benefits

- True collaborative AMR solution that integrates into existing manual cart workflows
- Flexible FetchCart options support a wide range of workflows
- Maximum robot utilization by decoupling robots from carts
- Simple setup and control for associates through handheld devices or automation through fully configured schedules
- Recognized for safety (CE mark)



## Warehouse Carts 2.0

The CartConnect AMR system features an advanced mobile robot that can autonomously pick up and drop off FetchCarts to any location within your facility. FetchCarts are available in three sizes—Standard, Tall and a flexible cart Base option that allows you to customize the cart to suit your specific payload.



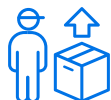
Specifications	CartConnect	FetchCart Base	FetchCart	FetchCart Tall*
<b>Weight</b>	163 lbs. (74 kg)	44 lbs. (20 kg)	75 lbs. (34 kg)	85 lbs. (38.5 kg)
<b>Height</b>	19.5 in. (49.6 cm)	24.5 in. (62.3 cm)	55.1 in. (140 cm)	65 in. (165 cm)
<b>Base Footprint</b>	20.7 in. (52.7 cm) wide, 22.6 in. (57.3 cm) diameter	32.7 in. (83 cm) width, 32.7 in. (83 cm) length	32.7 in. (83 cm) width, 32.7 in. (83 cm) length	32.7 in. (83 cm) width, 32.7 in. (83 cm) length
<b>Shelf Width</b>	—	32.7 in. (83 cm)	32.7 in. (83 cm)	32.7 in. (83 cm)
<b>Shelf Depth</b>	—	32.7 in. (83 cm)	32.7 in. (83 cm)	32.7 in. (83 cm)
<b>Max Payload Weight</b>	—	Up to 180 lbs. (81.6 kg)	Up to 150 lb (68 kg)	Up to 140 lbs. (63.5 kg)
<b>Max Speed</b>	3.4 mph (1.5 m/s)	—	—	—
<b>Turning Radius</b>	Turn in place	Turn in place	Turn in place	Turn in place
<b>Continuous Runtime</b>	~9 hrs	—	—	—
<b>Environment</b>	Indoor	Indoor	Indoor	Indoor
<b>Charging</b>	Autonomous docking	—	—	—
<b>Charge Time</b>	3 hrs to 90%	—	—	—
<b>2D Laser Sensor</b>	82 ft. (25 m), 220° (x1)	—	—	—
<b>3D Camera</b>	Yes (x2)	—	—	—

\* Requires a risk assessment

## Key Workflows



Case  
Picking



Replenishment /  
Putaway



Raw Material  
Delivery



ASRS  
Induction



E-Commerce  
Fulfillment



Staging /  
Consolidation



## Product Spotlight

### FetchCart Base

#### Maximize Every Payload with Custom Carts

##### Move More Material Types

FetchCart Base serves as the starting point for designing your own customized material transport system and applying automation creatively and efficiently throughout your facility. You can accommodate a wide variety of payloads and maximize capacity per your application requirements. FetchCart Base uses the same reliable docking mechanism as our standard FetchCarts, so CartConnect100 AMRs interface seamlessly.

Some unique applications include: detrash and dunnage removal, parts and tools delivery, replenishment of packing materials, gravity feed racks for manufacturing work cells, and many more.



## BROCHURE

FETCH CARTCONNECT100 AMR

### CartConnect100

Automatically pick up and drop off carts up to 125 lbs. (57 kg)



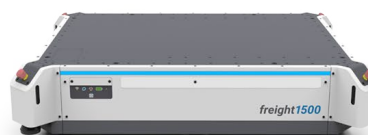
### PalletTransport1500

Move pallets up to 3,300 lbs. (1,500 kg) throughout the facility



### Freight1500

Handles up to US standard 40 x 48 in. pallets



### FlexShelf

Optimize fulfillment operations with intelligent, flexible automation



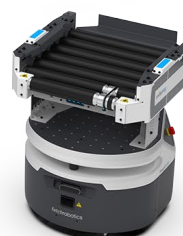
### Freight100 OEM Base

Build your own customized automated solution on a proven platform



### RollerTop

Integrate with current conveyor infrastructure



### HMIShelf

Transport packages, totes and bins up to 172 lbs. (78 kg)



WARNING: This product uses components which emit invisible laser radiation. Incorrect use or observing the safety laser scanner through optical instruments (such as magnifying glasses, lenses, telescopes) may be hazardous for the eyes.



Zebra AMRs carry a CE mark and meet regulatory requirements for product safety.

**ANSI/RIA R15.08**

Zebra AMRs conform with R15.08 safety standards published by the RIA (Robotics Industry Association)

For more information about Zebra's autonomous mobile robot solutions, please visit [www.zebra.com](http://www.zebra.com)



**NA and Corporate Headquarters**  
+1 800 423 0442  
[inquiry4@zebra.com](mailto:inquiry4@zebra.com)

**Asia-Pacific Headquarters**  
+65 6858 0722  
[contact.apac@zebra.com](mailto:contact.apac@zebra.com)

**EMEA Headquarters**  
[zebra.com/locations](http://zebra.com/locations)  
[contact.emea@zebra.com](mailto:contact.emea@zebra.com)

**Latin America Headquarters**  
[zebra.com/locations](http://zebra.com/locations)  
[la.contactme@zebra.com](mailto:la.contactme@zebra.com)

ZEBRA and the stylized Zebra head are trademarks of Zebra Technologies Corp., registered in many jurisdictions worldwide. Wi-Fi™ is a trademark of Wi-Fi Alliance®. All other trademarks are the property of their respective owners. ©2023 Zebra Technologies Corp. and/or its affiliates. 03/30/2023.